



Visually create and modify biometric files  
with real-time validation.

## WHORL KEY FEATURES

---

Drag-and-drop support for transaction and image files

---

Use as your default application to open supported images and biometric transactions

---

Supports specifications based on ANSI/NIST-ITL standard

---

Identifies and corrects missing and invalid data in submissions

---

Supports WSQ, RAW, JPEG, JPEG-2000, PNG, BMP, and TIFF image formats

---

Plugin support for customized file storage and integration

---

Supported on multiple platforms including Windows, Linux, and Mac OS X



---

Whorl is available exclusively from **Lakota Software Solutions**. Visit our website at [lakotasoftware.com](http://lakotasoftware.com) or contact our sales department at [sales@lakotasoftware.com](mailto:sales@lakotasoftware.com).



## VERSATILE ACROSS PLATFORMS AND SPECIFICATIONS

Whorl is a cross-platform Graphical User Interface (GUI) application developed by Lakota Software Solutions. Whorl is used to create, visualize, modify, and validate ANSI/NIST-ITL formatted files to comply with specifications. It fully supports the latest Federal Bureau of Investigation (FBI) and the Department of Defense (DoD) Electronic Biometric Transmission Specification (EBTS). Whorl can also be easily configured to support other specifications based on the ANSI/NIST-ITL standard through a common verification file format.

## WHORL HELPS TO ENSURE SPECIFICATION COMPLIANCE

Whorl has a user configured rules engine that allows the correct verification file to be automatically selected based on file content. Violations of the specification are highlighted in real time as changes are made. This makes it easy to identify potential problems and helps users quickly make corrections to ensure compliance with the appropriate target specification. Whorl supports multiple biometric specifications, which allows users to easily convert files from one specification to another with instant compliance feedback.

## EASILY VIEW, CONVERT, IMPORT, AND EXPORT IMAGES WITH WHORL

Whorl supports many image formats including WSQ, RAW, JPEG, JPEG-2000, PNG, BMP, and TIFF. Images can be easily imported into new or existing records and are automatically converted as needed. Whether an image is a standalone file or embedded into a transaction file, Whorl makes it easy to export the image into any of the supported formats.

## CUSTOM SYSTEM INTEGRATION WITH WHORL PLUGINS

Many organizations have custom file storage and retrieval needs that expand beyond traditional file systems. Whorl's plugin support allows organizations to provide seamless integration with their environment through an easy-to-implement Java interface. The plugin support promotes endless possibilities. For example, a plugin may expose a menu option to submit a file into a biometric system and wait for an e-mail response, which will be automatically opened in Whorl.

## FEATURES

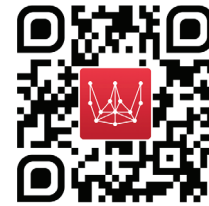
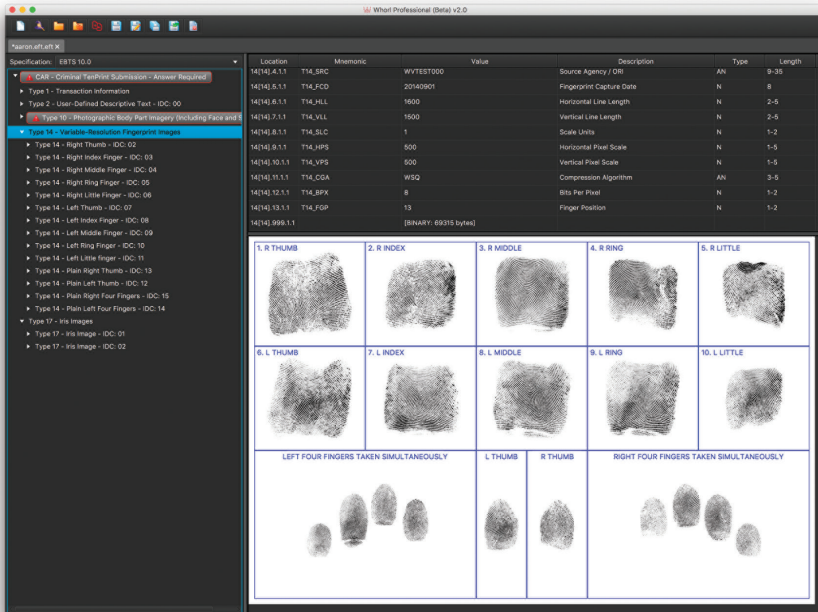
Feature	Standard	Pro
Create, View and Edit ANSI/NIST-ITL files	✓	✓
Validate Against Specification	✓	✓
Import/Export Images	✓	✓
Open Common Biometric Images	✓	✓
Batch Transaction Editor		✓
Slap Segmentation Tools		✓
Compare ANSI/NIST-ITL Files		✓
Transaction Creation Wizard		✓
Tenprint Card Segmentation		✓
Ability to Fix Biometric Images		✓
Ability to Create Custom Segmentation Templates		✓

**DESIGNED, DEVELOPED, AND  
MAINTAINED EXCLUSIVELY BY LAKOTA  
SOFTWARE SOLUTIONS**

Our engineering team is dedicated to providing technical support regarding the various components of the Whorl software, and we offer a 30-day money back guarantee.

## DISCLAIMER

Nothing contained on this document should be construed as a commitment on the part of Lakota Software Solutions to license any particular person or entity to use the Whorl software and documentation. While Lakota Software Solutions welcomes all inquiries regarding the product and technology, Lakota Software Solutions reserves the right to refuse to license the Whorl software and documentation to anyone for any reason.



Scan here to download an evaluation  
and request a quote.